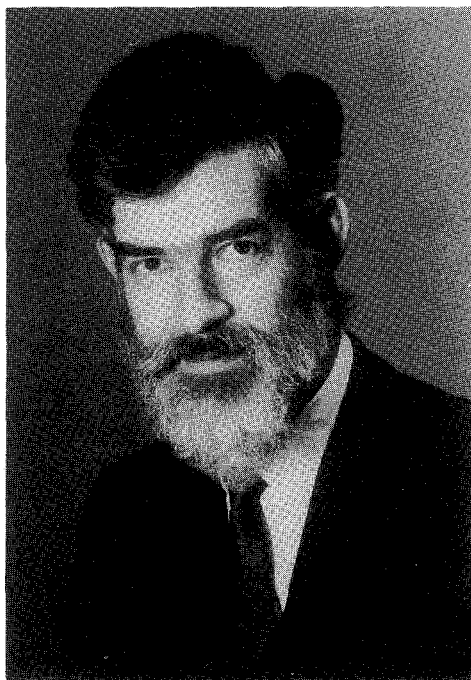


Memorial
ARNOLD REMINGTON PILLING, 1926–1994



Arnold R. Pilling, Crescent City, California, Fall 1967. (Courtesy of George L. Miller.)

Arnold Pilling was a founder of the Society for Historical Archaeology and its first Secretary-Treasurer. He was born 23 October 1926, in Berkeley, California, the same city where he later would take his bachelor's and doctor's degrees in anthropology. Arnold received his Ph.D. from the University of California at Berkeley in 1958 with a dissertation entitled *Law and Feud in an Aboriginal Society of North Australia*. In addition to his studies at Berkeley, he spent a year of graduate work at University College in London, England, and a year at the University of Sydney in Australia. Heavily influenced by Alfred L. Kroeber's approach to anthropology, Arnold Pilling considered himself first and foremost an anthropologist in the Boasian tradition.

Historical archaeology was just one of Arnold's many areas of research. Throughout his career he maintained a strong interest in Australian aborigines; the Yurok and other Native American groups of northwestern California; the Amish in Pennsylvania, Ohio, and Indiana; and more generally in ethno-history and linguistics. Some of his later research concentrated on African-American archaeology and gay/lesbian topics in social anthropology. Those diverse areas of research in many ways contributed to

the development and expansion of his central pursuits in historical archaeology and English ceramics for which we best remember him.

Robert Heizer was a major influence upon Arnold's interests as a student of archaeology. While an undergraduate, he worked on several California site surveys and excavations under Heizer's direction. Consequently, an early interest in historical archaeology would develop out of excavations at two central California sites—a Russian settlement excavated in 1949 and a Spanish mission investigated in 1955. Back then, very little historical archaeology was taking place in California, so Arnold had to teach himself about the historic ceramics he was finding.

When Arnold wanted to do a directed study of Spanish majolica in connection with his developing involvement in California mission sites he had to take the course through the art history department, since his mentors in anthropology did not consider the subject to be anthropological. His personal research into English ceramics, on the other hand, may have been spurred by the fact that some of his ancestors had emigrated from England where they had worked in the Staffordshire potteries. Once in America, they would establish the Gladding, McBean and Company pottery at Lincoln, California, not far from Sacramento.

Arnold's interest in historical archaeology turned yet another direction in 1954, while doing ethnographic fieldwork among the Tiwi on Bathurst Island in Australia. During that time he had the opportunity to conduct preliminary archaeological work at Fort Dundas (1822–1924) on Melville Island, Northern Australia. It is also worth noting that, given its early date, the research Arnold performed in Australia was probably the first historical archaeology done on that continent.

Wayne State University in Detroit hired Arnold Pilling in January 1957 as a lecturer in anthropology, and by 1970 he had been promoted through the ranks to full professor. For almost 40 years he taught a variety of courses, ranging from the history of anthropological theory to courses on Native Americans, as well as historical archaeology. He was active in the affairs of the Department of Anthropology until his death on 27 October 1994. Arnold also served in those years as Director of the Wayne State University Museum of Anthropology, which he founded in 1959.

Many students at Wayne State received their first exposure to historical archaeology by taking Arnold's Saturday field classes or by working as volunteers in the anthropology museum. He was one of the first historical archaeologists to concentrate on urban sites, and archaeological research at Wayne State during the late 1950s through the 1960s focused almost exclusively on the salvage of sites being destroyed by construction in downtown Detroit. Back in 1962, when the Detroit Bank and Trust Company was planning to build a new headquarters, its proposed location was on the site of Fort Lernault, a fortification built by the British in 1778. Through his own efforts, Arnold was able to secure some funding from the bank for salvage excavations prior to construction, but the funding was small by today's standards.

In fact, most of the salvage excavations Arnold conducted in downtown Detroit were unfunded, which meant the work was done on a voluntary basis by students and local amateurs. Moreover, access to the sites for research was often dependent on the good will of the construction crews. A high level of camaraderie developed around those projects, where crews had to make do with minimal equipment and work under highly variable and at times adverse conditions, such as just in front of the bulldozers! I recall that during one winter's excavation of a ceramic importer's dump site, we had to deal with large, frozen blocks of clay and sherds, which we thawed by leaving them behind the tailpipe of a university station wagon left running for that purpose.

Containers in the Wayne State University Museum consisted of whatever could be scrounged at Arnold's behest, as funding for curation was even more scarce. One student worked in a large Detroit hospital, which was an excellent source of various cardboard boxes that had held medications and hospital supplies; Demerol® boxes were our favorite for storing artifacts. We also used a lot of heavy, clear plastic sheeting from discarded oxygen tents as dust covers for our storage areas.

The world of unfunded, make-do archaeological salvage work was changed by the introduction of environmental laws, which provided funding for testing and excavation of threatened sites. Much was gained by those laws, but some things were also lost. Without funding and deadlines, one was free to change one's objectives in the study of collections. The cost of living in Detroit in the 1960s was very low, of course, making this type of archaeology possible. I doubt we could ever go back to that again with the same results. Because of those salvage excavations, however, several of Arnold's students were already trained and ready when archaeology became a routine part of the development process in the Detroit area under the new laws.

Years of salvage excavations by the WSU Museum of Anthropology built up a fine collection of English ceramics, which have been well used in providing students a strong exposure to the typology and chronology of these wares. In addition, Arnold donated a large part of his personal library to the Anthropology Museum, and his field notes have been given to the Walter P. Reuther Archives of Labor History and Urban Affairs of Wayne State University. As a result, he leaves behind a resource legacy that will continue to serve students and researchers for years to come.

Teaching was one of Arnold's greatest gifts. He had a wonderful way of telling stories and presenting material in a historical perspective, which made his lectures a pleasure to attend. Arnold rarely used notes in presenting his classes and was fully capable of going off on tangents in response to questions during class. One might be fooled by the lack of lecture notes into thinking that his lectures were not organized. However, I realized the solid foundation of his "off-the-cuff" style while sitting in on his Saturday lecture on ceramics a year after having been through the class. When I later compared my notes from both lectures, the basic outline of organization had remained the same despite new information being introduced.

Arnold was a bibliophile and played an active role in ordering out-of-print books for the University library. It was difficult to come up with a topic upon which he did not have some information or reference suggestions. In addition, Arnold always was available to listen to students or colleagues with research problems, willingly offering suggestions on sources or approaches.

Some students shied away from Dr. Pilling, because he was a tough grader on term papers and particularly tough on grammatical and spelling errors. It was widely known that his grading habits often resulted in the need for multiple drafts of a paper, and I, for one, can remember getting back papers marked "D+, do you wish to rewrite?" But while he was a stern task master, he was rarely judgmental, and Arnold often spent large amounts of his time working with students on their writing, as well as on their research. Those of us fortunate enough to have had Arnold Pilling as a mentor gained a great deal from the experience.

GEORGE L. MILLER

BIBLIOGRAPHY OF ARNOLD REMINGTON PILLING

HART, C. W. M., AND ARNOLD R. PILLING

1960 *The Tiwi of North Australia*. Henry Holt, New York.

1977 *The Tiwi of North Australia*. Fieldwork edition. Holt, Rinehart, and Winston, New York.

HART, C. W. M., ARNOLD R. PILLING, AND JANE C. GOODALE

1988 *The Tiwi of North Australia*. Holt, Rinehart, and Winston, New York.

PILLING, ARNOLD R.

1948a Archaeological Survey of Northern Monterey County. California Archaeological Survey Manuscripts 106. University of California, Berkeley.

1948b The Vaqueros Province. California Archaeological Survey Manuscripts. University of California, Berkeley.

1949a Recording Local Collections. In *A Manual of Archaeological Field Methods*, edited by Robert F. Heizer, pp. 58-60. National Press, Milbrae, California.

1949b Structural Remains. In *A Manual of Archaeological Field Methods*, edited by Robert F. Heizer, pp. 43-44. National Press, Milbrae, California.

- 1950a Recording Local Collections. In *A Manual of Archaeological Field Methods*, edited by Robert F. Heizer, pp. 59–61. Revised edition. National Press, Milbrae, California.
- 1950b Structural Remains. In *A Manual of Archaeological Field Methods*, edited by Robert F. Heizer, pp. 44–45. Revised edition. National Press, Milbrae, California.
- 1950c The Archaeological Implications of an Annual Coastal Visit for Certain Yokuts Groups. *American Anthropologist* 52:438–440.
- 1951 The Surface Archaeology of the Pecho Coast, San Luis Obispo County, California. *Masterkey* 25:196–200.
- 1952a The British Museum Collection from near Avila, California. *American Antiquity* 18:169–172.
- 1952b California Mission Maiolica. California Archaeological Survey Manuscripts 139. University of California, Berkeley.
- 1955a Relationships of Prehistoric Cultures of Coastal Monterey County, California. *Kroeber Anthropological Society Papers* 12:70–87.
- 1955b Glazed Ceramics—Relationships in California (Farallon Island). California Archaeological Survey Manuscripts 231. University of California, Berkeley.
- 1957a Australia. *Asian Perspectives* 2:151–177.
- 1957b An Incised Pebble from Lassen County, California. *Reports of the California Archaeological Survey* 38:6. University of California, Berkeley.
- 1958a Australia. *Asian Perspectives* 3(1):98–111.
- 1958b Recording Local Collections. In *A Guide to Archaeological Field Methods*, edited by Robert F. Heizer, pp. 102–103. National Press, Palo Alto, California.
- 1958c Structural Remains. In *A Guide to Archaeological Field Methods*, edited by Robert F. Heizer, p. 71. National Press, Palo Alto, California.
- 1959a Archaeology. In *Palaeopathology of a California Archaeological Site*, by James G. Roney, Jr. *Bulletin of the History of Medicine* 33(2):100.
- 1959b Local History and Local Archaeology. *Detroit Historical Society Bulletin* 16(1):4–10.
- 1961a Genetic Change among the Tiwi of North Australia. Paper presented at the 10th Pacific Science Congress.
- 1961b Six Archaeological Sites in the Detroit Area, I. *The Michigan Archaeologist* 7:13–30.
- 1961c Six Archaeological Sites in the Detroit Area, II. *The Michigan Archaeologist* 7:33–54.
- 1962a *Aborigine Culture History: A Survey of Publications 1954–1957*. Wayne State University Press, Detroit, Michigan.
- 1962b A Historical Versus a Non-historical Approach to Social Change and Continuity among the Tiwi. *Oceania* 32(4):321–326. Sydney, Australia.
- 1962c Some Questions on Taos Dancing. *Ethnomusicology* 6(2):88–92.
- 1962d Statistics, Sorcery, and Justice. *American Anthropologist* 64:1057–1059.
- 1963a Aranda. *Encyclopedia International*, Vol. 1, p. 515. Grolier, New York.
- 1963b Australian Aborigines. *Encyclopedia International*, Vol. 1, pp. 223–225. Grolier, New York.
- 1963c Cultural Material on the 585-Foot and 605-Foot Beach Lines of the Western Shore of Lake St. Clair. *The Michigan Archaeologist* 9:15–16.
- 1963d Review of *Chicago Area Archaeology*, edited by Elaine A. Bluhm. *American Antiquity* 28:406–407.
- 1963e Review of *I, the Aboriginal*, by Douglas Lockwood. *American Anthropologist* 65:1152–1153.
- 1963f Review of *World of Wakara*, by Conway B. Sonne. *Western Folklore* 22(1):63–64.
- 1964a Cushman's Wolf Lake Site, Jackson County, Michigan. *The Totem Pole* 47(2–3).
- 1964b Matriarchy. In *A Dictionary of the Social Sciences*, edited by Julius Gould and William Kolb, pp. 416–417. Free Press of Glencoe, Toronto.
- 1964c Moiety. In *A Dictionary of the Social Sciences*, edited by Julius Gould and William Kolb, pp. 436–437. Free Press of Glencoe, Toronto.
- 1964d Patriarchy. In *A Dictionary of the Social Sciences*, edited by Julius Gould and William Kolb, p. 458. Free Press of Glencoe, Toronto.
- 1964e Review of *An Archaeological Survey of Mutau Flat, Ventura County, California*, by Hal Eberhart and Agnes Bierman Babcock. *American Antiquity* 30:119–120.
- 1964f Tasmanians. *Encyclopedia International*, Vol. 17, p. 517. Grolier, New York.
- 1964g Torres Strait Islanders. *Encyclopedia International*, Vol. 18, p. 167. Grolier, New York.
- 1965a An Australian Aboriginal Minority: The Tiwi See Themselves as a Dominant Majority. *Phylon* 26:305–314.
- 1965b Fort Lernoult Excavations. In *Wayne State University Department of Sociology and Anthropology, Museum of Anthropology*, pp. 6–17. Report to Dean Martin Sterns for the period between 1 May 1962 and 30 April 1963. On file, Wayne State University, Detroit, Michigan.
- 1965c Pontchartrain Hotel Excavations. In *Wayne State University Department of Sociology and Anthropology, Museum of Anthropology*, pp. 17–20. Report to Dean Martin Sterns for the period between 1 May 1962 and 30 April 1963. On file, Wayne State University, Detroit, Michigan.

- 1966a Life at Porter Site 8, Midland County, Michigan. *The Michigan Archaeologist* 12:235–248.
- 1966b Fort Pontchartrain to Pontchartrain Hotel. *Proceedings of the Second Annual Michigan Junior Science and Humanities Symposium 1966*:19–29.
- 1967a Skyscraper Archaeologist: The Urban Archaeology in Detroit. *Detroit Historical Society Bulletin* 23(8):4–9.
- 1967b International Conference on Historic Archaeology, 6–7 January 1967, at Southern Methodist University, Dallas, Texas, U.S.A. *Current Anthropology* 9:231–232.
- 1968a Southeastern Australia: Level of Social Organization. In *Man the Hunter*, edited by Richard B. Lee and Irven DeVore, pp. 138–145. University of Chicago Press, Chicago, Illinois.
- 1968b A Use of Historical Sources in Archaeology: An Indian Earthworks near Mt. Clements, Michigan. *Ethnohistory* 15:152–202.
- 1969a Six Archaeological Sites in the Detroit Area, I. Reprint of 1961 article. In Selections from *The Michigan Archaeologist*, Vols. 1–10, assembled by James E. Fitting. *Michigan Archaeological Society Special Publications* 1:121–138. Ann Arbor.
- 1969b Six Archaeological Sites in the Detroit Area, II. Reprint of 1961 article. In Selections from *The Michigan Archaeologist*, Vols. 1–10, assembled by James E. Fitting. *Michigan Archaeological Society Special Publications* 1:139–160. Ann Arbor.
- 1969c Vancouver Collection from Trinidad, California, as Described in the Notes of Arnold R. Pilling, December 1969. Manuscript on file, Humboldt County Collection, Humboldt State University, Arcata, California.
- 1970a Introduction. In *Diprotodon to Detribalization: Studies of Change Among Australian Aborigines*, edited by Richard A. Waterman and Arnold R. Pilling, pp. 1–48. Michigan State University Press, East Lansing.
- 1970b Changes in Tiwi Language. In *Diprotodon to Detribalization: Studies of Change Among Australian Aborigines*, edited by Richard A. Waterman and Arnold R. Pilling, pp. 256–274. Michigan State University Press, East Lansing.
- 1973 The Area of Mound Road and 7 Mile Road on July 27th, 1973. Report prepared by Department of Anthropology, Wayne State University, Detroit. Submitted to Office of the State Archaeologist, Bureau of History, Michigan Department of State, Lansing.
- 1974a Dating Early Photographs by Card Mounts and Other External Evidence: Tentative Suggestions. *Image* 17(1):11–16.
- 1974b Eight Historic Artifacts from 4-Mnt-12. *Monterey County Archaeological Society Quarterly* 4(1).
- 1975 Eight Historic Artifacts from 4-Mnt-12. *Monterey County Archaeological Society Quarterly* 4(2):1–5.
- 1977 Land Use Histories of Detroit's Early Areas. In *The Detroit Consortium: A Model for City/University Collaboration on Urban Concerns*, edited by Otto Feinstein and John J. Munsial, pp. 119–120. Center for Urban Studies, Wayne State University, Detroit, Michigan.
- 1978a Glazed Earthenware. In *The Knife River Phase*, by Donald J. Lehmer, W. Raymond Wood, and C. L. Dill, pp. 358–365, 414–415, 439–441, 444–447. Report prepared by Department of Anthropology and Sociology, Dana College, Blair, Nebraska, and American Archaeology Division, University of Missouri, Columbia (contract number C3537[68] and purchase orders A-3514[75] and A-3521[78]). Submitted to Interagency Archaeological Services, U.S. Department of the Interior, Denver, Colorado.
- 1978b Yurok. In *Handbook of North American Indians*, edited by William Sturtevant. Vol. 8, *California*, edited by Robert F. Heizer, pp. 137–154. Smithsonian Institution, U.S. Government Printing Office, Washington, D.C.
- 1979 Native American Religious Rights: Constitutional Considerations. *Indian Historian* 12(1):13–19.
- 1980 Southeastern Michigan. In *Phase II Completion Report for the Conference on Michigan Archaeology: Major Problem Orientations in Michigan Archaeology, 1980–1984*, edited by James W. Mueller. Report No. R-2134 on file, Commonwealth Associates, Inc., Jackson, Michigan.
- 1981a Linked Riverfront Parks Project: St. Aubin Park, Land Use History. Report prepared by Department of Anthropology, Wayne State University, Detroit. Submitted to Office of the State Archaeologist, Bureau of History, Michigan Department of State, Lansing.
- 1981b Marinea/Lagoon Alternative: Chene Park Land I and II, Land Use History. Report prepared by Department of Anthropology, Wayne State University, Detroit. Submitted to Office of the State Archaeologist, Bureau of History, Michigan Department of State, Lansing.
- 1981c Sacred Sites: Some Cross-cultural Questions. *Archaeology Resource Center Newsletter* 5(4):3.
- 1982a A Cultural Resource Inventory, Southeastern Michigan: Phase I, Michigan Historical Division Grant S81–160, Completion Report. Report prepared by Department of Anthropology, Wayne State University, Detroit. Submitted to Office of the State Archaeologist, Bureau of History, Michigan Department of State, Lansing.
- 1982b Detroit: Urbanism Moves West; Palisaded Fur-trade Center to Diversified Manufacturing City. *North American Archaeologist* 3:225–242.
- 1982c Preface. In *Chilula: People from the Ancient Redwoods*, by Robert G. Lake, Jr., pp. xi–xv. University Press of America, Washington, D.C.
- 1982d Chilula Concept of Confession and Sickness. In *Chilula: People from the Ancient Redwoods*, by Robert G. Lake, Jr., pp. 154–156. University Press of America, Washington, D.C.
- 1982e Chilula War Story on Round Valley. In *Chilula: People from the Ancient Redwoods*, by Robert G. Lake, Jr., pp. 149–154. University Press of America, Washington, D.C.

- 1985 Protective Recovery and Testing at Deer Lake Site, 20MT119.F.S. CRI No. 09-04-03-200: Final Report. Report prepared by Department of Anthropology, Wayne State University, Detroit. Submitted to Office of the State Archaeologist, Bureau of History, Michigan Department of State, Lansing.
- 1986a Dating Photographs. In *Ethnohistory: A Researcher's Guide*, edited by Dennis Wiedman. *Studies of Third World Societies, Publication* 35:167-226. College of William and Mary, Williamsburg, Virginia.
- 1986b Euro-American Glazed Ceramics and Glass. In *Papers in Northern Plains Prehistory and Ethnohistory: Ice Glider 320L110*, edited by W. Raymond Wood. *South Dakota Archaeological Society, Special Publication* 10:113-137, 203-215. Sioux Falls.
- 1988 Anthropology's Culture and Personality School and Homosexuality: A Review Article. *Society of Lesbian and Gay Anthropologists Newsletter* 11(1):19-22.
- 1989a Lost Caption #1. *News from Native California* 2(6):7.
- 1989b Alexander Smith Taylor, Early California Ethnologist: An Update. Paper presented at the Fifth Annual California Indian Conference, Humboldt State University, Arcata, California.
- 1989c Teaching about Homosexuality: Lesbian and Gay Issues and the Anthropology Curriculum. Paper presented at the 88th Annual Meeting of the American Anthropological Association, Washington, D.C.
- 1989d Review of *Crossroads of Continents: Cultures of Siberia and Alaska*, by Aaron Crowell. *Choice* 26:1718.
- 1989e Review of *Trail to Heaven: Knowledge and Narrative in a Northern Native Community*, by Robin Ridington. *Choice* 26:1369.
- 1989f Review of *To Fish in Common: The Ethnohistory of Lummi Indian Salmon Fishing*, by Daniel L. Boxberger. *Choice* 27:352.
- 1989g Review of *The Curtain Within: Haida Social and Mythical Discourse*, by Marianne Boelscher. *Choice* 27:522.
- 1989h Review of *Archaeological Perspectives on the Battle of the Little Bighorn*, by Douglas D. Scott, et al. *Choice* 27:542.
- 1989i Yurok Aristocracy and Great Houses. Special Issue: The California Indians. *American Indian Quarterly: Journal of American Indian Studies* 13(4):421-436.
- 1990a Review of *Buying Back the Land: Organizational Struggle and the Aboriginal Land Fund Commission*, by Ian Palmer. *American Anthropologist* 92:221-222.
- 1990b Review of *End of an Era: Aboriginal Labour in the Northern Territory*, by Ronald M. Berndt and Catherine H. Berndt. *American Anthropologist* 92:221-222.
- 1990c Observer Sexual Orientation, Fieldwork Rapport, and Data Collection on Homosexuality and Hermaphroditism. Paper presented at the 89th Annual Meeting of the American Anthropological Association, New Orleans, Louisiana.
- 1990d Northwest California Indian Gender Classes: "Those Who Could Not Marry," "Those Men Who Have Never Been Near a Woman," and "Women Who Do Men's Things." *Society of Lesbian and Gay Anthropologists Newsletter* 14(2):15-23.
- 1990e Review of *Tracing Archaeology's Past: The Historiography of Archaeology*, by Andrew L. Christenson. *Choice* 28:1358.
- 1990f Yurok of Northwest California: Some Sub-Classes of Males and Females; Men and Women Who Could Not Marry. Sixth International Conference on Hunting and Gathering Societies. *Hunting and Gathering Societies: Changing Peoples, Changing Theories. Precirculated Papers and Abstracts* 1:59. University of Alaska, Fairbanks.
- 1991a Australian Local and Regional Histories as Anthropological Works. *Reviews in Anthropology* 18:17-27.
- 1991b Review of *Conversations with Claude Lévi-Strauss*, by Claude Lévi-Strauss and Didier Eribon, translated by Paula Wissing. *Choice* 28:1815-1816.
- 1991c Review of *A History of Archaeological Thought*, by Bruce G. Trigger. *Winterthur Portfolio* 26(1):81-82.
- 1991d Northwest California Indian Gender Classes: "Those Who Could Not Marry," "Those Men Who Have Never Been Near a Woman," and "Women Who Do Men's Things." Paper presented in plenary session, "Gender in Native California: A Tribute to Arnold R. Pilling," organized by Lee Davis, at the Seventh Annual California Indian Conference, Sonoma State University, Rohnart Park, California.
- 1991e Uses of Photographs in Diachronic Anthropology. Paper presented at the 90th Annual Meeting of the American Anthropological Association, Chicago, Illinois.
- 1992a Homosexuality among the Tiwi of North Australia. In *Oceanic Homosexualities*, edited by Stephen O. Murray, pp. 25-31. Garland, New York.
- 1992b Review of *Voices of the First Day: Awakening in the Aboriginal Dreamtime*, by Robert Lawlor. *Choice* 29:1792.
- 1993a Cross-Dressing and Shamanism among Selected Western North American Tribes. Paper presented at the 92nd Annual Meeting of the American Anthropological Association, Chicago, Illinois.
- 1993b Review of *Gay Ideas*, by Richard D. Mohr. *Choice* 30:1507.
- 1994a Review of *To the American Indian: Reminiscences of a Yurok Woman*, by Lucy Thompson. *Journal of California and Great Basin Anthropology* 14(2):254-260.
- 1994b Review of *Economics and the Dreamtime: A Hypothetical History*, by N. G. Butin. *Choice* 31:1620.
- [1996a] Use of Photographs in Diachronic Studies. In *Diachronic Anthropology*, edited by Joseph Chartkoff, Walter Randolph Adams, and David Rindos. Academic Press, New York, in press.

- [1996b] Euro-American Occupation: British Period. In *Michigan Archaeology*, edited by John Halsey. Cranbrook Institute Press, Bloomfield Hills, Michigan, in press.
- PILLING, ARNOLD R., AND RICHARD K. BEARDSLEY
1948 Notes on Various Collections from Monterey County. California Archaeological Survey Manuscripts 26. University of California, Berkeley.
- PILLING, ARNOLD R., AND MARK C. BRANSTNER
1982 The Collot Map. Report on file, Bureau of History, Michigan Department of State, Lansing.
1985 The Collot Map, Part II. Report on file, Bureau of History, Michigan Department of State, Lansing.
- PILLING, ARNOLD R., AND GORDON L. GROSSCUP
1992 Dating Mexican Photographic Post Cards. Paper presented at the 91st Annual Meeting of the American Anthropological Association, Washington, D.C.
- PILLING, ARNOLD R., GORDON L. GROSSCUP, AND GEORGE L. MILLER
1967 Nineteenth-Century Glazed Ceramics in Michigan and Elsewhere: Part 2, Archaeological Evidence. *Coffinberry News Bulletin* 14:60-70.
- PILLING, ARNOLD R., AND GEORGE L. MILLER
1967a Nineteenth-Century Glazed Ceramics in Michigan and Elsewhere: Part 1, Rationale. *Coffinberry News Bulletin* 14:49-56.
1967b Nineteenth-Century Glazed Ceramics in Michigan and Elsewhere: Part 3, Other Types of Evidence. *Coffinberry News Bulletin* 14:77-82.
- PILLING, ARNOLD R., AND PATRICIA L. PILLING
1970 Cloth, Clothes, Hose, and Bows: Nonsedentary Merchants among the Indians of Northwestern California. *Proceedings of the 1970 Annual Spring Meetings of the American Ethnological Society*:97-119. University of Washington Press, Seattle.
- PILLING, ARNOLD R., AND DAVID TEETER
1981 Review and Reproduction of the Archaeological Reports of Wayne State University: Michigan History Division Grant S81-125; Completion Report. Prepared by Department of Anthropology, Wayne State University, Detroit. Submitted to Office of the State Archaeologist, Bureau of History, Michigan Department of State, Lansing.
- PILLING, PATRICIA L., AND ARNOLD R. PILLING
1989 Jews of Del Norte County, California: The Wolfe Morris Family. *Western States Jewish History* 21:122-131, 239-247.
- RIDDELL, FRANCIS A., CHESTER CHARD, AND ARNOLD R. PILLING
1953 Chipped Stone. In *The Archaeology of the Napa Region*, edited by Robert F. Heizer. *University of California Anthropology Records* 12:261-265, 290-294. Berkeley, California.
- SHOSHANI, JEHEKEL, ARNOLD R. PILLING, AND HENRY T. WRIGHT
1989 Kessell Side-notched Point: First Record for Michigan. *Current Research in the Pleistocene* 6:22-24. Center for the Study of Early Man, University of Maine, Orono.
- SHOSHANI, JEHEKEL, HENRY T. WRIGHT, AND ARNOLD R. PILLING
1990 Ecological Context of Two Early Archaic Projectile Points from Michigan: A LeCroy and a Kessell Point Recovered at 200K394. *The Michigan Archaeologist* 36:1-20.
- WATERMAN, RICHARD A., AND ARNOLD PILLING (EDITORS)
1970 *Diprotodon to Detribalization: Studies of Change Among Australian Aborigines*. Michigan State University Press, East Lansing.

[The National Anthropological Archives, Smithsonian Institution, curates a set of Arnold Pilling's research notes relating to their manuscript collection of George Gibb's mid-19th-century observations on Klamath River and Humboldt Bay, California, peoples. Pilling catalogued the Harry Roberts photographic collection deposited at the Humboldt State University Library in Arcata, California, which contains numerous historic images of northwestern California natives, principally Yurok. Of course, most of Arnold Pilling's unpublished manuscripts and papers are housed at Wayne State University in Detroit, Michigan.—Memorials Editor]