

The Dating Game: The C.L. Flaccus Glass Co.

By Bill Lockhart, Pete Schulz, Carol Seer and Bill Lindsay

The involvement of the Flaccus family with glass containers is complex and involved. While only Charles L. Flaccus actually manufactured bottles and jars, other family members used containers embossed with the Flaccus name. The name also appeared on numerous paper labels attached to glass jars. Thus, we address not only the C.L. Flaccus Glass Co. but also other Flaccus operations that used marked bottles.

History

C.L. Flaccus Glass Co., Tarentum, Pennsylvania (1879-1928)

C.L. Flaccus Glass Co., Leechburg, Pennsylvania (1880-some point before 1913)

C.L. Flaccus Glass Co., Beaver Falls, Pennsylvania (prior to 1893-1902)

C.L. Flaccus Glass Co., California, Pennsylvania (?-1919)

Charles L. Flaccus purchased the bankrupt Lippencott & Co. plant at Tarentum, Pennsylvania, in 1879. Despite the addition of other factories over the years, Tarentum remained the principal plant until the company's demise. In 1881 it had a single furnace with seven pots, making flint prescription ware. By 1890, production had diversified to include prescription ware, milk bottles, mustards, inks, nursing and perfume bottles, liquor flasks and bottles, and castor oils. Five years later, Flaccus was offering a full line of ware in flint and green (Creswick 1987:266; Humphreys 1882:57; Flaccus 1890; 1895; Teal & Wallace 2005:102; Welker & Welker 1985:54).

Flaccus opened a second factory in Leechburg, Pennsylvania, in 1880. At some point before 1893, he purchased the former Enterprise Glass Co. at Beaver Falls, Pennsylvania.

It was in the latter plant that he produced the first machine-made container glass in the United States. At the end of 1892, he received a license from the United States Glass Co. to use the two-mold Arbogast machine. After experimenting for a year, he began production in early 1894, the first product being Vaseline jars

(*National Glass Budget* 1910:1).

Flaccus enlarged the Tarentum plant in 1901 and incorporated in May 1904. At some time during the teens, he leased the California Bottle Co. plant in California, Pennsylvania, evidently until 1919. The business went into receivership in 1928, and the factory was sold the following year. The firm made prescription ware, whiskey, and proprietary medicine bottles, along with various types of jars in at least colorless and light green (*Glassworker* 1919:1; Teal & Wallace 2005:102; Welker & Welker 1985:54).

Toulouse (1971:190) noted that the first commercial ware made by Flaccus was a Vaseline jar and that Flaccus was the first company in the U.S. to "produce bottles on a mechanical device." Flaccus had closed the Beaver Falls plant by 1902. Toulouse (1971:191) also stated that Flaccus was first listed as producing fruit jars in 1918, a contention closely supported by the Thomas Registers (see below) which first listed fruit jars in 1917. He also blamed Prohibition for the demise of the Flaccus company, a strange statement considering that the company seems to have made numerous non-alcoholic bottle and jar styles – not to mention that Prohibition had been in effect for some time when the last plant closed in 1928.

C.L. Flaccus & Co. was listed as a non-union plant under the "Flint Bottle Factory" heading in 1897 and 1898, making glass in 40 pots (*National Glass Budget* 1897:7; 1898:7). In 1904, the plant offered "prescription and proprietary ware; machine packers' ware" (*American Glass Review* 1934:167). The company continued to be listed as making flint prescription and druggist bottles in the Thomas Registers (1905:104; 1907:161; 1909:202; 1912:482). By 1914, possibly earlier, the company made milk bottles, along with prescription bottles – and fruit jars by 1916.

Until 1918, only flint bottles were listed, but the 1920 edition included "all kinds flint prescriptions druggists', packers in flint, amber and blue" with a continued listing for milk bottles and fruit jars. The listing changed slightly in 1921, adding "Packers in Flint, Amber & Blue" (Thomas

Register 1914:532, 536; 1915:579, 581; 1916:661, 664, 3782; 1917:731, 734, 4104; 191:811, 814, 4429; 1920:828, 830, 8616; 1920:828, 830, 4616; 1921:782, 784, 4573).

By 1927, Flaccus made "prescriptions, vials, flint, green and amber beers and minerals, patent, proprietary, liquors, flasks, packers and preservers" by both machine and hand production at four continuous tanks with 34 rings and one day tank with four rings. The listing remained the same in 1928, and the company was "in hands of receivers" in 1929 (*American Glass Review* 1927:133; 1928:135; 1929:97). Flaccus was not listed in the 1930 edition.

Flaccus Brothers, Wheeling, West Virginia, and New Philadelphia, Ohio (1879-1906)

Creswick (1987:60, 266) placed the Flaccus Brothers in business from 1879 to 1906. She noted that the father had been a retail grocer since at least 1876, and the brothers began a wholesale business by 1878. Caniff (1997:45) basically agreed with Creswick, although he dated the end of the company at 1905.

Flaccus & Elliott, Wheeling, West Virginia (1897-1898)

Caniff (1997:42) told the story of Flaccus & Elliott:

Partner Edward C. Flaccus and bookkeeper George H. Elliott left the thriving Flaccus Bros. Company in 1897 to form the Flaccus & Elliott Co., a fact verified by trademark registration and articles of incorporation. The company operated for a little over a year, if that. On June 21, 1898, Edward C. Flaccus filed a trademark for "Chilimato" for the E.C. Flaccus Company.

E.C. Flaccus, Wheeling, West Virginia (1898-1920)

Creswick (1987:60, 266) placed E.C. Flaccus in business from 1898 to 1920. Caniff (1997:45-46) agreed with the Creswick dates but noted that the company used brand names of "STAG, STEERS

HEAD, CHAMPION & OHIO VALLEY,” although the same catsup, pickles, mustard, and other foods were probably placed in bottles and jars for all brands. Although the company offices were in Wheeling, Factory A was also located in Wheeling; Factory B was in New Philadelphia, Ohio; and Factory C was in Barnesville, Ohio. Unlike, the C.L. Flaccus glass plants, these were all food processing operations.

Creswick (1987:60) noted that “the Flaccus companies were in the food preserving business and did not make their own containers.”¹ She cited Flaccus descendants who stated that both the Central Glass Co. and the “Hobbs Glass Works” (probably Hobbs-Brockunier Glass Co., both of Wheeling, West Virginia) made jars for the companies. Creswick further speculated that “later the Hazel-Atlas Glass Company also made some of the Flaccus jars or lids” and offered a long but plausible explanation. Roller (1983:125), too, suggested that the Flaccus companies did not make their own jars, but he was less certain who did.

Bottles and Marks

C.L.F.G.CO. (1898-1899; 1902-1906)

The C.L.F.G.CO. mark was embossed on the bases of South Carolina Dispensary flasks and cylindrical bottles by the C.L. Flaccus Glass Co., Pittsburgh, Pennsylvania [Figures 1 and 2]. Pittsburgh refers to the office, however, not the factory. Huggins (1997:10) noted that there were several minor variations of the mark (although he did not describe them) as well as a capital “F” or “G” embossed above the mark on some bottles, although we have seen a “B” – and there were probably other letters as well. We have also noticed that the periods on many of the flasks are larger than those on typical marks [Figure 3]. Teal in Teal & Wallace (2005:102, 109) also noted the mark on Dispensary flasks and bottles and also attributed the marks to Flaccus. Flaccus sold a total of 19 railroad carloads of bottles to the Dispensary from 1898 to 1899 and an additional 1,000 carloads from 1902 to 1906.

This mark may have only been applied due to regulations demanded by the Dispensary. According to Teal in Teal and Wallace (2005:130):

The requirement for a glass house supplying bottles to the [South Carolina] Dispensary to have their



Figure 1: C.L.F.G.CO. on the Base of a South Carolina Dispensary Bottle (eBay)



Figure 2: South Carolina Dispensary bottle (eBay)



Figure 3: C.L.F.G.CO. on the Base of a South Carolina Dispensary Flask (eBay)

initials blown into their bottles was a quality control measure that resulted from having more formal and specific bids and contracts. All of the glass house contracts from 1897 forward in the Dispensary records at the State Archives carry this provision.

This may explain why the mark is only found on Dispensary bottles.

CLF

Whitten (2007) noted that he had seen these initials on the base of a “clear prescription/medicinal bottle” and dated the mark 1879-1928. This is the only report of the mark that we have seen.

F in a keystone (ca. 1914-at least 1920)

Giarde (1980:22) noted that the C.L. Flaccus Glass Co. used the F-in-a-keystone mark from 1900 to 1928 on milk bottles, although milk containers were not a major product of the firm. Toulouse (1971:190) was less certain, dating the mark, “Probably not before 1900” [Figure 4]. Aside from milk bottles, neither author mentioned other bottle types in conjunction with this mark. The mark was apparently not used on fruit jars and was not noted by either Toulouse (1969), Roller (1983), or Creswick (1987).

When Giarde noted 1900 as a beginning date for the mark, he probably derived the date from Toulouse. Toulouse (1971:191) noted “side-lever pressed milks [Flaccus] started to make in 1902. This is the earliest reference we have found to machine-made milk bottles.

However, the Thomas Registers (see history section above), first list milk bottles at Flaccus in 1914, and the listing continued to at least 1920. However, the 1927 list did not include milk bottles. Schadlich ([ca. 1990]) noted that the keystone symbol was found on milk bottle bases, but the only example we have recorded (from the California State Parks milk bottle collection in Sacramento) had the logo embossed on the heel with “25 / 67” on the base. The milk bottle was from a Pennsylvania dairy and was made by a blow-and-blow machine (no ejection or valve mark).

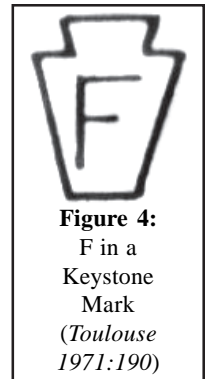


Figure 4:
F in a
Keystone
Mark
(Toulouse
1971:190)

FL in the Massachusetts Seal

From 1910 to 1947, the Commonwealth of Massachusetts required that all glass factories selling bottles to dairies within the state mark their containers with a Massachusetts seal. From some point after 1910, factories embossed the seal on the shoulder of each milk bottle, usually in a circular form embossed "MASS (arch) / {factory designator} / "SEAL (inverted arch)." These often appeared in a small plate mold. The mark used by Flaccus was "FL" (Blodget 2006:8; Schadlich [ca. 1990]). In at least some cases, the FL seal was placed on the center body of milk bottles in a plate mold (personal communication, Albert Morin, 3/4/2007), although the shoulder seal was more common [Figure 5].



Figure 5: FL Massachusetts Seal
(Albert Morin)

F 13

Albert Morin (personal communication, 3/4/2007), reported that all milk bottles with the FL Massachusetts seal that he has seen were marked "F 13" on the heel [Figure 6]. It is highly possible that the "F 13" mark has been seen on other milk bottles but not identified with Flaccus.



Figure 6: F 13 on a Milk Bottle Base
(Albert Morin)

C.L. FLACCUS PITTSBURGH (ca. 1879-ca. 1910 or later)

Creswick (1987:62) illustrated a grooved-ring wax-sealer jar embossed C.L. FLACCUS / PITTSBURGH on the base

[Figure 7]. She noted, however, that the company "made a variety of bottles and jars, including some of the Mason's Patent Nov. 30th 1858 jars." Roller (1983:125) noted the same jar and added that it appeared in a ca. 1895 Flaccus ad. He dated the jars "c. 1879-1910s." The ad also mentioned the Mason jar described by Creswick.

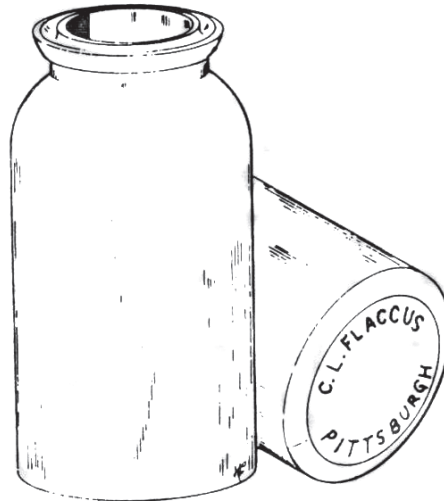


Figure 7: C.L. FLACCUS on the base of a grooved-ring, wax-sealer fruit jar (Creswick 1987:62)

FLACCUS BROS. (1880-1920)

Creswick (1987:60-61) illustrated and described 11 jars and accompanying lids made or used by the Flaccus Brothers [Figures 8 and 9]. All of these bore the Steershead" trademark. She did not include date ranges for any of the jars, and they were not marked by any manufacturer's marks. The Steers Head was first trademarked (# 21,314) by the Flaccus Brothers for a paper catsup label on June 21, 1892, with first use claimed in 1880. The mark was again registered (#67,527) for use on a large variety of products by Edward C. Flaccus on February 4, 1908, but there was no first use date (Creswick 1987:258, 260).



Figure 8 (L): Flaccus Brothers Steershead Jar (Creswick 1987:61)



Figure 9 (R): Flaccus Brother Steershead Lid (Creswick 1987:61)

Toulouse (1969:295-296) illustrated and described four variations of food jars with the FLACCUS BROS. and STEERSHEAD marks but noted that there were "many slightly changed versions of the decoration forms of each jar listed." Toulouse dated the jars ca. 1890-1898 and claimed that they were probably made by the Hazel Glass Co. or Atlas Glass Co.

A fifth Steershead brand illustrated by Toulouse (1969:296) was quite different from the one used by the others, showing more of the steer's body. He claimed the same dates and makers as in the other four.

These jars were apparently very common. According to Roller (1983:124-125):

The Flaccus jars were used to pack various types of condiments, and may be found with numerous styles of embossings, closures, colors, shapes and sizes. A complete listing of Flaccus jars would be a book in itself. . . . A trademark using FLACCUS and a steer's head figure was registered by Flaccus Bros. on June 21, 1892, with use claimed since 1880. The trademark STEER HEAD was registered on February 4, 1908 by Edward C. Flaccus, who had been a member of the firm before he started his own company in 1897.

E.C. FLACCUS CO. (ca. 1890)

Creswick (1987:61) only illustrated a single style of jar and lid for E.C. Flaccus with a fancy design on the embossed body label and the trademarked stag head of the Stag Brand [Figures 10 and 11]. Toulouse (1969:117-118) discussed three variations of the jars and illustrated the complex design. He dated the jars ca. 1890 and noted that they were probably made for Flaccus by the Hazel Glass Co. In his later book, he was more vehement, dating the



Figure 10 (L): E.C. Flaccus Stag Brand Jar (Creswick 1987:61)



Figure 11 (R): E.C. Flaccus Stag Brand Lid (Creswick 1987:61)

stag head at "circa 1890 only."

Roller (1983:125) further discussed these jars:

The E. C. Flaccus Co., of Wheeling, W.Va., was in the food packing business from c. 1899 to 1920. Its parent company, Flaccus & Elliott, filed an application on May 18, 1897 for the trademark FLACCUS (over a stag's head), claiming use since January 1, 1897. Edward C. Flaccus registered the trademark STAG BRAND FLACCUS (over a stag's head) on April 7, 1908.

Roller (1983:125) also noted that the maker was uncertain "but may have been Wellsburg Glass Co., Wellsburg, W.Va., c. 1906-1911, of which E.C. Flaccus was president.

STEERSHEAD

Toulouse (1971:488) claimed that this mark was used by Flaccus Brothers ca. 1890-1900, but we have been unable to verify the use of the logo except in conjunction with the drawing of the steer head.

Discussion and Conclusions

Although C.L. Flaccus Glass Co. was the only glass factory operated by any of the Flaccus relatives, we have included the Flaccus Brothers, Flaccus & Elliott, and the E.L. Flaccus Co., food packers that had their bottles and jars made by outside glass houses, because the jars were marked with the company names and are so common that they are likely to show up in the archaeological record. Many of the food jars may also have identifying paper labels.

Marks with clear company names (e.g., FLACCUS BROS.) are self-evident. However, the C.L.F.G.Co. logo was especially created for use on liquor bottles and flasks for the South Carolina Dispensary, which demanded such marks from the makers of its bottles. The F-in-a-keystone logo may only be found on milk bottles, although that is currently unconfirmed. If that conclusion is correct, the keystone mark was probably only used from ca. 1914 to ca. 1920 or later, but was not used by 1927. FL as the Massachusetts Seal is solidly confirmed by research, although we have not found Flaccus marks in connection with the seals from Rhode Island, Maine, Pennsylvania, or any other state. The use of F13 as a heelmark by Flaccus also needs more empirical research.

Future research needs to confirm which

marks were actually used on milk bottles and during what periods. Another area for investigation is a more solid dating for the manufacture of milk bottles by the C.L. Flaccus Glass Co.

Acknowledgments

We would like to thank Albert Morin for contributing the photo of the Massachusetts FL seal and for information about Massachusetts bottles. As always, we are grateful to Douglas M. Leybourne, Jr., for allowing us to reproduce drawings from the books created by Alice Creswick in 1987.

Sources

American Glass Review

1927 *Glass Factory Yearbook and Directory*. American Glass Review, Pittsburgh, Pennsylvania.

1928 *Glass Factory Yearbook and Directory*. American Glass Review, Pittsburgh, Pennsylvania.

1929 *Glass Factory Yearbook and Directory*. American Glass Review, Pittsburgh, Pennsylvania.

1934 *Glass Factory Yearbook and Directory*. American Glass Review, Pittsburgh, Pennsylvania. Includes reprint of the *Glass Trade Directory for 1904*. Commoner Publishing Co., Pittsburgh, Pennsylvania.

Blodgett, Bradford G.

2006 "Milk Bottles from the Heart of the Commonwealth: A Collector's Guide to the Milk Bottles from the City of Worcester, Massachusetts, 1890-2006." Unpublished manuscript.

Caniff, Tom

1997 *The Label Space: The Book*. Privately published, Steubenville, Ohio.

Creswick, Alice

1987 *The Fruit Jar Works, Vol. I, Listing Jars Made Circa 1820 to 1920's*. Douglas M. Leybourne, N. Muskegon, Michigan.

Flaccus, C.L., Glass Co.

1890 *Catalogue of C. L. Flaccus, Manufacturer of Flint Glass Bottles, Jars, and Perfumers' Stoppered Ware*. Private printing, Pittsburgh.

1895 *Flint Glass, Green and Amber Bottles*. Private Printing, Pittsburgh.

Giarde, Jeffery L.

1980 *Glass Milk Bottles: Their Makers and Marks*. Time Travelers Press, Bryn Mawr, California.

Glassworker

1919 *Flaccus Plant Now Union, States Unverified Rumor*. Glassworker 37(3):1.

Huggins, Phillip Kenneth

1997 *The South Carolina Dispensary: A Bottle Collector's Atlas and History of the System*. Sandlapper Publishing, Orangeburg, South Carolina.

Humphreys, M. S.

1882 [Glass.] *Annual Report of the Secretary of Internal Affairs, Commonwealth of Pennsylvania* 4(3):56-60.

Journal of Industrial and Engineering Chemistry

1913 "The Present Status of the Glass Bottle and Hollow Ware Industries in the United States." *Journal of Industrial and Engineering Chemistry* 5(11):95-1954.

National Glass Budget

1897 "Glass Directory." *National Glass Budget* 12(42):7.

1898 "Flint, Green and Cathedral Glass Factories of the United States and Canada in Operation." *National Glass Budget* 13(38):7.

1910 Machine Bottle Making. *National Glass Budget* 26(3):1.

Roller, Dick

1983 *Standard Fruit Jar Reference*. Privately published.

Schadlich, Louis

[ca. 1990] "Milk Bottles Marked by Manufacturers and Jobbers." Unpublished manuscript.

Teal, Harvey S. and Rita Foster Wallace

2005 *The South Carolina Dispensary & Embossed S.C. Whiskey Bottles & Jugs, 1865-1915*. Privately Published, Columbia, South Carolina.

Thomas Register of American Manufacturers

1905-1906 *The Buyers' Guide: Thomas' Register of American Manufacturers and First Hands in all Lines*. Thomas Publishing Co., New York.

1907-1908 *Thomas' Register of American Manufacturers and First Hands in all Lines: The Buyers Guide*. Thomas Publishing Co., New York.

1909 *Thomas' Register of American Manufacturers and First Hands in All Lines: A Classified Reference Book for Buyer and Sellers*. Thomas Publishing, New York.

1912 *Thomas' Register of American Manufacturers and First Hands in All Lines: A Classified Reference Book for Buyer and Sellers*. Thomas Publishing, New York.

1914 *Thomas' Register of American*

Manufacturers and First Hands in All Lines: A Classified Reference Book for Buyer and Sellers. Thomas Publishing, New York.

1915 *Thomas' Register of American Manufacturers and First Hands in All Lines: A Classified Reference Book for Buyer and Sellers*. Thomas Publishing, New York.

1916 *Thomas' Register of American Manufacturers and First Hands in All Lines: A Classified Reference Book for Buyer and Sellers*. Thomas Publishing, New York.

1917 *Thomas Register of American Manufacturers and First Hands in All Lines*. 9th ed. Thomas Publishing Co., New York.

1918 *Thomas Register of American Manufacturers and First Hands in All Lines*. 10th ed. Thomas Publishing Co., New York.

1920 *Thomas Register of American Manufacturers and First Hands in All Lines*. Thomas Publishing Co., New York.

1921 *Thomas Register of American Manufacturers and First Hands in All Lines*. Thomas Publishing Co., New York.

Toulouse, Julian Harrison

1969 *Fruit Jars*. Thomas Nelson & Sons, Camden, New Jersey.

1971 *Bottle Makers and Their Marks*. Thomas Nelson, New York.

Welker, John and Elizabeth Welker

1985 *Pressed Glass in America: Encyclopedia of the First Hundred Years, 1825-1925*. Antique Acres Press, Ivyland, Pennsylvania.

Footnotes:

¹ This did not include C.L. Flaccus, who most certainly made his own glassware.